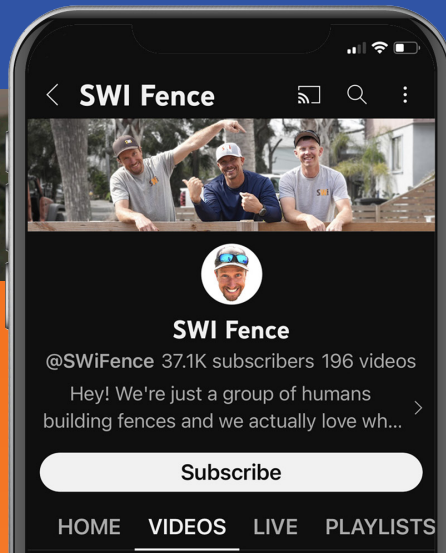


Is it really stronger even without concrete?

All the answers here!



 YouTube

Watch & Learn MORE!



For more info visit ifencellc.com!

307-578-8040

ORDER YOUR POSTS HERE!



NO DIG SYSTEM

STRONGER QUICKER CLEANER

BENEFITS OF THE SYSTEM

10 times stronger than a traditional aluminum fence

NO digging

NO mess

Easily adjustable

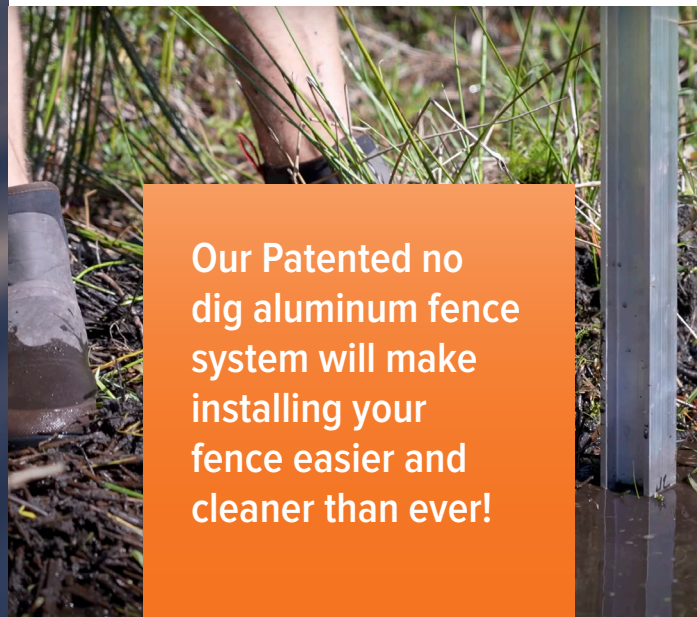
Easily repairable

Quick 1 day installation on most projects

Works with all standard 2x2 .062 and .080 thick and up to .10 thickness.



Not only is our Aluminum No-Dig Fence System easier and cleaner, it's stronger too! Today, in the interest of science, we put it to the test to determine just how much stronger No-Dig Aluminum is over traditional aluminum fence posts.



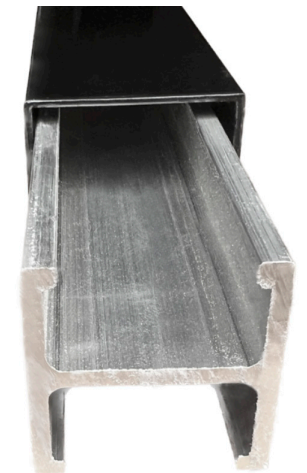
Our Patented no dig aluminum fence system will make installing your fence easier and cleaner than ever!

The two types of posts are I-Post No Dig Insert (for gate, end, line, blank posts) & L-Post No Dig Insert (corners only). All no dig posts are a hefty .125 thick.

I-POST NO DIG INSERT

Aluminum fence line, gate or end post

FITS .060 and .080 wall 2x2 square LINE, END, GATE and BLANK posts only



L-POST NO DIG INSERT

2" Aluminum fence corner post 6005A-T5 heat treated

FITS .060 and .080 wall 2x2 square CORNER posts only (post not included)

